



PAGNONI IMPIANTI

Monza - Italia



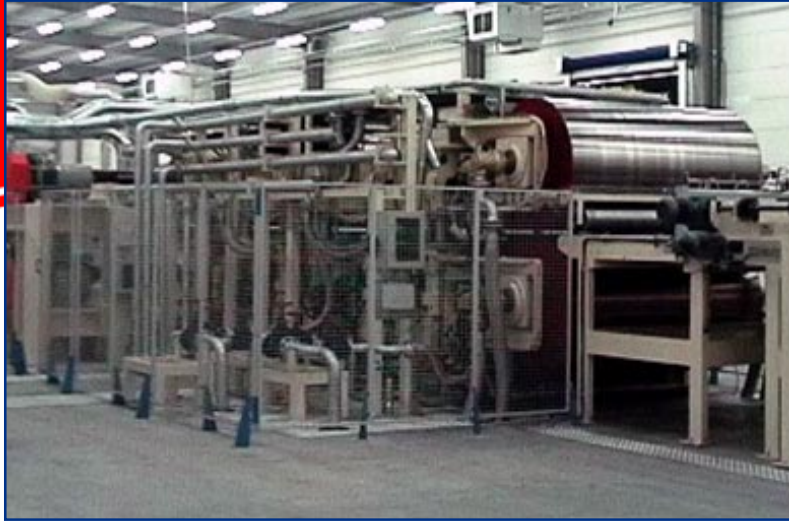
PAGNONI IMPIANTI

leader in pressing technology for

- ▶ particleboard
- ▶ medium density fiberboard (MDF)
- ▶ plywood
- ▶ decorative HPL
(High Pressure Laminates)
- ▶ melamine and phenol faced panel
short-cycle lamination
Pagnoni SMARTLINE
Pagnoni SELECTA
- ▶ **Pagnoni EASYLAM®**
the continuous way of laminating
and bonding
- ▶ cement-bonded particleboard
- ▶ rubber belts & industrial products
- ▶ paper & paperboard reconstitution
- ▶ PVC & polypropylene plates
- ▶ cork plates and panels
- ▶ reconstituted leather
- ▶ reconstituted marble
- ▶ Roll Bond (evaporator boards)
- ▶ industrial laminates
- ▶ special products

Pagnoni EASYLAM®

the CONTINUOUS DOUBLE STEEL BELT PRESS



Pagnoni EASYLAM®

the CONTINUOUS DOUBLE STEEL BELT PRESS

- ▶ markets demand new technology to increase/improve production
 - ▶ the press is the “bottleneck” in many processes
 - ▶ the solution to overcome the “bottleneck”: **Pagnoni EASYLAM®**



the continuous press
designed for:

- huge capacity
- fast production
- low production cost
- high quality
- great flexibility

Pagnoni EASYLAM®

the CONTINUOUS DOUBLE STEEL BELT PRESS

The products

- ▶ panel veneering
- ▶ engineered parquet, with two, three, or more layers
- ▶ veneered engineered panels, on honeycomb frame
- ▶ doors and door posts
- ▶ plywood
- ▶ furniture tops & doors with CPL and HPL
- ▶ continuous natural wooden edges
- ▶ special products and laminating materials



Pagnoni EASYLAM®

the CONTINUOUS DOUBLE STEEL BELT PRESS

The advantages

- ▶ no foundation pit: **low cost for installation**
- ▶ zero dead time for press loading / unloading:
use of faster glues, means more capacity
- ▶ simultaneous pressing of different size panels:
extreme production flexibility
- ▶ fast glues and adhesives, allowing 5 to 20 times shorter pressing time: **increased capacity and lower production cost**
- ▶ four separate heating circuits:
use of materials requiring different temperatures
- ▶ low heat transfer to the core material:
Immediate material process, without intermediate cooling storage
- ▶ press opening calibration with electronic control:
different panel thickness management flexibility

Pagnoni EASYLAM®

the CONTINUOUS DOUBLE STEEL BELT PRESS

Main characteristics

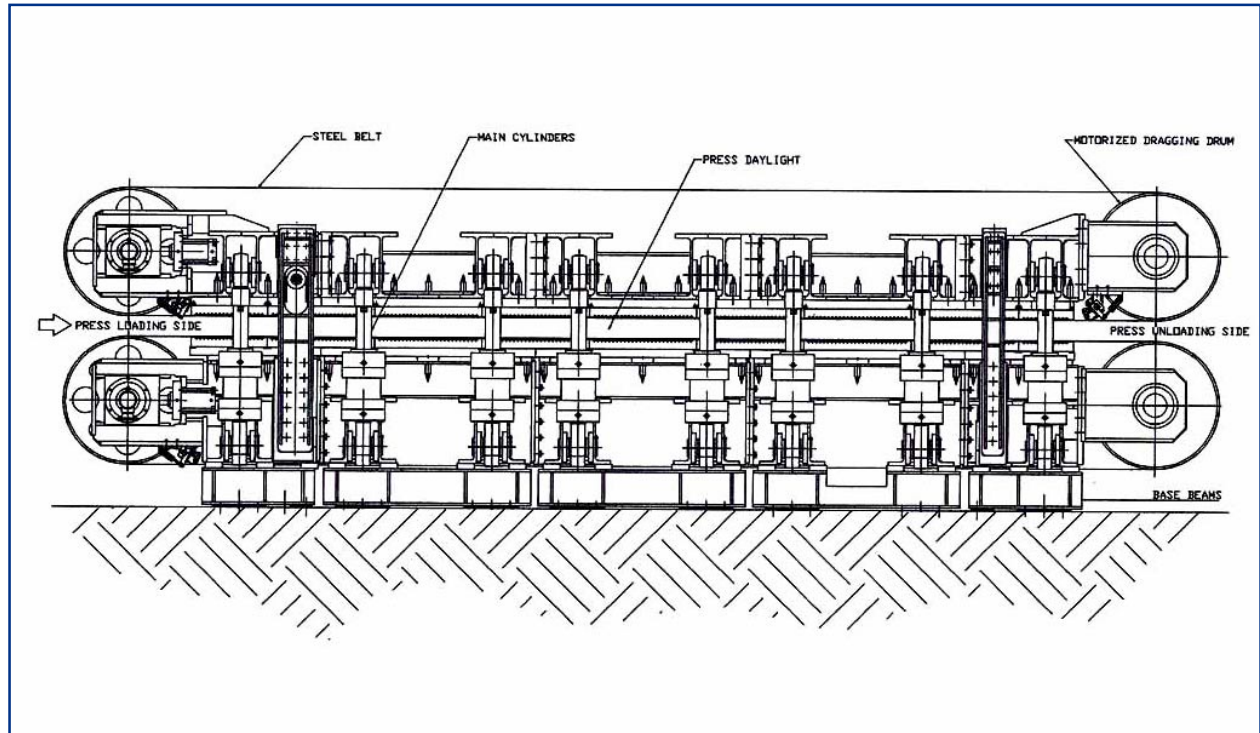
- ▶ specific pressure
up to 80 N/cm² (116 PSI)
- ▶ max mechanical speed
40 m/min (130 ft/min)
- ▶ four independent
heating circuits:
drums inlet temperature: max 160°C (32°F)
hot platens temperature: max 120°C (248°F)



Pagnoni EASYLAM[®]

the CONTINUOUS DOUBLE STEEL BELT PRESS

The system



Pagnoni EASYLAM®

the CONTINUOUS DOUBLE STEEL BELT PRESS

Pagnoni EASYLAM® - standard dimensions

| Model | Belt width | Pressing width | Pressing length | |
|------------|---------------------|------------------|-----------------|----------|
| | mm / ft | mm / ft | mm | ft |
| 35/80/220 | 350 mm | 305 mm | 2200 | 7' 21/2" |
| 35/80/420 | 1' 11/4" | 1' | 4200 | 13' 9" |
| 70/80/220 | 700 mm | 650 mm | 2200 | 7' 21/2" |
| 70/80/420 | 2' 31/2" | 2' 11/2" | 4200 | 13' 9" |
| 100/80/220 | 1000 mm 3' 31/2" | 940 mm 3' 1" | 2200 | 7' 21/2" |
| 100/80/420 | | | 4200 | 13' 9" |
| 100/80/620 | | | 6200 | 20' 4" |
| 140/80/220 | 1400 mm 4' 7" | 1300 mm 4' 3" | 2200 | 7' 21/2" |
| 140/80/420 | | | 4200 | 13' 9" |
| 140/80/620 | | | 6200 | 20' 4" |
| 140/80/820 | | | 8200 | 26' 11" |



Pagnoni EASYLAM®

the CONTINUOUS DOUBLE STEEL BELT PRESS

Pagnoni EASYLAM® - standard dimensions

| Model | Belt width | Pressing width | Pressing length | |
|-------------|---------------------|---------------------|-----------------|----------|
| | mm / ft | mm / ft | mm | ft |
| 170/80/220 | 1700 mm 5' 7" | 1600 mm 5' 3" | 2200 | 7' 21/2" |
| 170/80/420 | | | 4200 | 13' 9" |
| 170/80/620 | | | 6200 | 20' 4" |
| 170/80/820 | | | 8200 | 26' 11" |
| 200/80/220 | 2000 mm 6' 61/2" | 1900 mm 6' 3" | 2200 | 7' 21/2" |
| 200/80/420 | | | 4200 | 13' 9" |
| 200/80/620 | | | 6200 | 20' 4" |
| 200/80/820 | | | 8200 | 26' 11" |
| 230/80/420 | 2300 mm 7' 61/2" | 2200 mm 7' 21/2" | 4200 | 13' 9" |
| 230/80/620 | | | 6200 | 20' 4" |
| 230/80/820 | | | 8200 | 26' 11" |
| 230/80/1020 | | | 10200 | 33' 5" |
| 270/80/820 | 2700 mm 8' 10" | 2600 mm 8' 6" | 8200 | 26' 11" |
| 270/80/1020 | | | 10200 | 33' 5" |

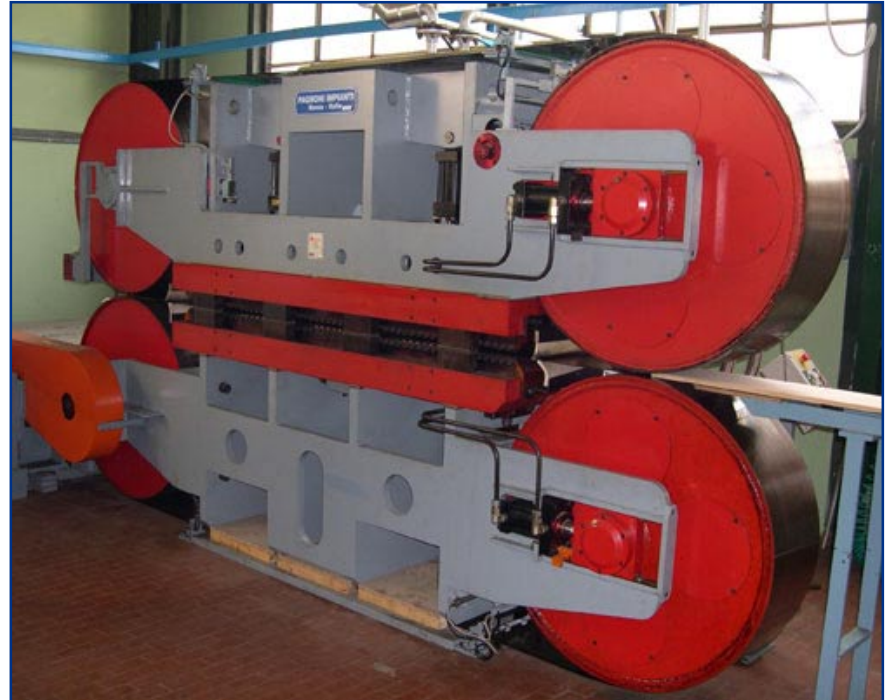


Pagnoni EASYLAM®

the CONTINUOUS DOUBLE STEEL BELT PRESS

The Laboratory

- ▶ Pagnoni is an authorized Research Laboratory
- ▶ Assistance & advice of most qualified world producers of PVA, UF, PU glues
- ▶ Easylab unit installed in our Laboratory in Monza, Milan:
350 mm (14") wide
2000 mm (78") long
- ▶ Easylab unit at our Customers' disposal to execute all types of pressing and gluing tests



PAGNONI IMPIANTI srl

Strada per Cascina Restelli, 26-28
20040 Aicurzio (Milan) - Italy
Tel. +39.039.23.52.1
Fax +39.039.23.52.222

Skype ID pagnoniimpianti

<http://www.pagnoni.com> - .eu - .net
<http://www.pagnoniimpianti.it>
email: pagnoni@pagnoniimpianti.it